

MEGATECH



MEP, EM&I

CONTRACTING & SERVICES



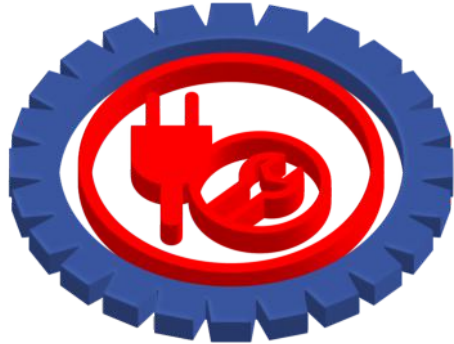
**BUILD & MAINTAIN
SUCCESSFUL RELATIONSHIP
IN THE CONSTRUCTION**



MEGA TECHNOLOGY & SERVICES SPC

www.megatechservices.net

MEGATECH



MEP, EM&I

CONTRACTING & SERVICES

**Company
Profile**

Table Of Content

About Company	04
Mission Vision	05
Organogram	06
Our Philosophy	07
Our Services	08
Infrastructure Development	09
Industrial Plants Projects	10
Electro Mechanical Services	11
Workshop Based Mechanical Services	12
Electro-mechanical Services	13
Rebar Workshop (Cut & Bend Reinforcement Steel)	14
Telecommunication & Power Services	16
Telecommunication Mechanical Supply & Services.	17
Real Estate (Construction, Sale, Purchase & Rent)	18
Technical Manpower Assistance	20
Staff & Labour Accommodation	22
Management Services	24
Construction Of Temporary Site Facilities	24
Demolition Of Temporary Site Facilities & Construction's Leftovers	26
Transportation Services	27
Completed Project	28

About Company

MEGA TECHNOLOGY & SERVICES SPC (MEGATECH) shall execute all prospective projects in close proximity and technical collaboration with its parent company, "Talal Said Rashid Al Salhi Trad & Cont LLC" & "Al-Rami National LLC" which have to its credit the distinction of executing different projects in varied climatic conditions.

The company have diversified its activity from General Civil Engineering Work like Building of Sophisticated Civil Engineering to Electro-Mechanical Erection Work, Multistory Buildings, Bridges, Roads, Highways, Drainage, Water and Sewerage Network, Electrical Substations, Overhead Transmission Lines, Maintenance and Operation of industrial plants and Technical Manpower Assistance etc.

The company's activities have been diverse covering in multifaceted fields in the construction industry with indigenous skill and technical know-how and are capable of performing similar jobs with modern technology and expertise independently or through collaboration with Omani and Foreign Associates.



Mission Statement



Mega Technology & Services SPC (MegaTech) is Build and maintain successful relationship in the construction and professional leadership services industries with the integrity, creativity, ingenuity, and refined technical skills that from the core of our business. Pledge is to establish lasting relationship with our customers by exceeding their expectations and gaining their trust through exceptional performance by every member of the construction team.

Vision Statement

MEGA TECHNOLOGY & SERVICES SPC (MEGATECH) Combines year of successful experience and creative talent with the resources to reduce risk and approach each opportunity in the most simple, straightforward, affordable terms, committed to becoming the contractor of choice, pursuing excellence through dedication, experience and disciplined employees with an ongoing passion to deliver quality, timely and profitable projects.

Keeping in view our understanding and strong conviction that SULTANATE OF OMAN is growing rapidly, and it is clear from a review of the key indicators that SULTANATE OF OMAN's economy is permanently & currently in a strong position, with employment opportunities, output, population growing, and high economic activity levels. MEGA TECHNOLOGY & SERVICES SPC (MEGATECH) have been registered by Oman Chamber Of Commerce & Industries and Ministry of Trading & Industries and MOMP which manages, regulates, and develops all economic activities at SULTANATE OF OMAN.

ORGANOGRAM



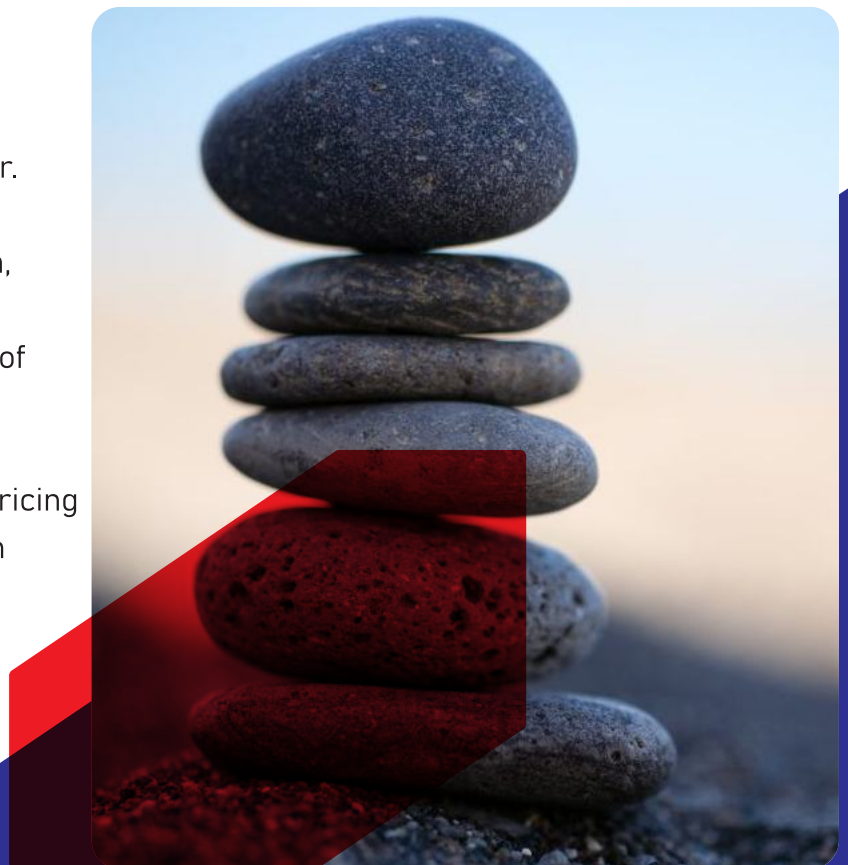
Our Philosophy

"Deliver outstanding performance and customer satisfaction on every project"

At "MEGA TECHNOLOGY & SERVICES" (MEGATECH), Our objective is our customer satisfaction. This include not only their satisfaction with quality construction, timeliness and cost effectiveness of our services, but with the entire construction process as well. Performance evaluation can be unique for each project and customer. To ensure that we deliver outstanding performance as our customer measures it, our field team adapt their operations to meet each customer's unique needs and expectations. In this process, we ensure that we maintain our own internal performance standards. Each job-site team adopts the mission and objectives of our customer, forming with the customer a seamless connection and an organization that resembles the customer's organization itself.

"As our customer, we make the following commitments to you"

- We shall deliver the highest quality level attainable on every project we undertake.
- We shall be on-schedule, responsive and prompt with every Contract Requirement.
- We shall provide fully qualified and technically staff.
- We shall authorize our on-site staff to independently solve problems and develop strategies to make each project more efficient and successful.
- We shall appropriately formulate performance metrics and on-site organizational structure to meet the needs of each contract and customer.
- We shall make full use of our human, financial and technical resources to achieve the performance objectives of each contract.
- We shall be fair and competitive in pricing and strive to provide customers with the best value on every project.



Our Services

CONSTRUCTION SERVICES

BUILDING CONSTRUCTIONS_COMMERCIAL&RESIDENTIAL (CIVIL&MEP)

We have expertise in building construction of following categories:

- Mixed Use Development Projects
- Shopping Malls & Commercial Avenues
- Government Facilities
- Auditoriums
- Destination Hotels & Resorts
- Hospitals, Medical Centers & Clinics
- Cinemas & Movie Theaters
- Office Buildings & Complexes
- Residential Complexes
- Warehouses & Storage Facilities
- Labor Accommodation & Camps



INFRASTRUCTURE DEVELOPMENT

BUILDING CONSTRUCTIONS_COMMERCIAL&RESIDENTIAL (CIVIL&MEP)

We have expertise in infrastructure construction of following categories:

- Mixed Use Development Projects
- Roads & Carriageways
- Sport Complex & Stadiums
- Airports
- Parking Structure
- Public Safety Facilities
- Electrical Sub-Stations
- Transmission Line
- Exhibition & Convention Centers
- Water Supply System (Transmission Lines & Pump Stations_Primary&Secondary)
- Sewerage Supply System (Transmission Lines & Pump Stations_Primary&Secondary)
- Oil & Gas Piping & Pipeline Supply System's Construction & Maintenance



INDUSTRIAL PLANTS PROJECTS

BUILDING CONSTRUCTIONS_COMMERCIAL&RESIDENTIAL (CIVIL & MEP)

We have expertise in infrastructure construction of following categories:

- Oil & Gas Refineries: Tanks Erections, Welding, Sand Blasting & painting.
- Oil & Gas Refineries: Pipe Erections, Welding, HydroTesting, Chemical Flushing, Sand Blasting & painting, Insulation & Alu. Cladding.
- Oil & Gas Refineries: RACKS Erections, Welding, Sand Blasting & painting.
- Ammonia Plants: Mechanical Erections, Welding, Testing & Commissioning.
- Boilers/Vassals: Mechanical Erections, Welding, Testing & Commissioning.
- Cement Factories: Mechanical Erections, Welding, Testing & Commissioning.
- Waste Management Plants: Mechanical Erections, Welding, Testing & Commissioning.



ELECTRO-MECHANICAL SERVICES

We have expertise in infrastructure construction of following categories:



ELECTRICAL



PLUMBING & SANITARY WORKS



AIR CONDITIONING & REFRIGERATION



**FIRE PREVENTION SYSTEMS
(FA & FF SYSTEMS)**



MECHANICAL



WORKSHOP BASED MECHANICAL SERVICES.

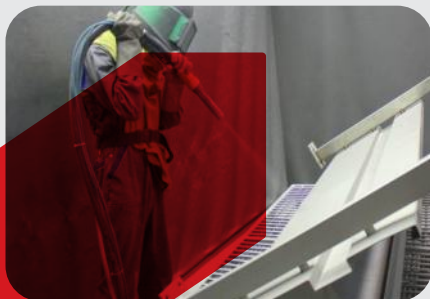
We have expertise in infrastructure construction of following categories:

- MECHANICAL FABRICATION OF PIPES, PIPE SUPPORTS, STRUCTURE, SHEDS, CABINS, TANKS.
- B- ALL TYPE OF WELDING SERVICES (UPHILL, DOWNHILL, DOLLYMIX)

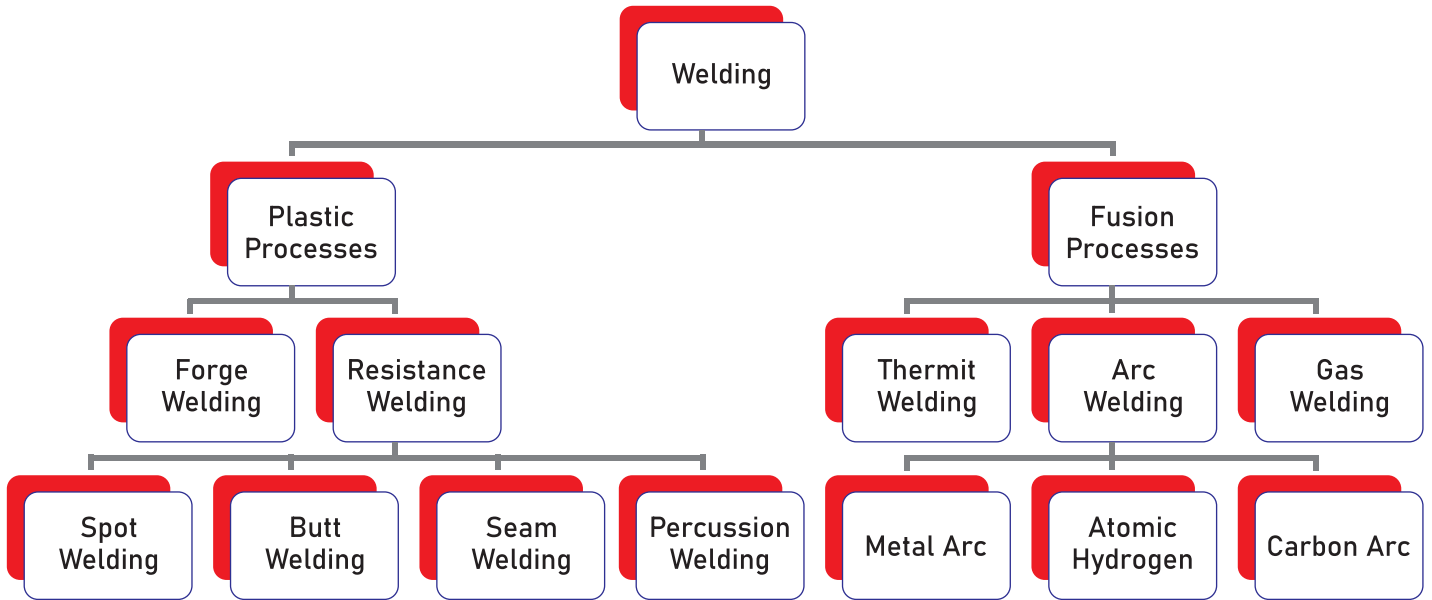
Types of Welding Processes We Followed:

The following are types of welding processes according to the method of heat generated:

- MIG welding
- Stick welding
- TIG welding
- Plasma Arc welding
- Electron beam welding
- Laser beam welding
- Gas welding
- Flux cord arc welding
- Atomic hydrogen welding
- Electroslag welding
- Sand Blasting & Galvanizing
- Painting



ELECTRO-MECHANICAL SERVICES



REBAR WORKSHOP (CUT & BEND REINFORCEMENT STEEL)

We offer Rebar Workshop Based Services for the under-listed works:

Our Cut & Bend services for steel reinforcement bars, is one of the pre-fabrication solutions aimed at helping customers raised productivity standards in construction. We do this by working closely with customers to deliver solutions that are customized to the project blueprint, redefining concepts of time, inventory and manpower management, and material waste reduction

ADVANTAGES OF CUT & BEND SERVICES

- Rebars are cut & bent to exact specifications, ensuring precision and consistency.
- Cut & Bend Reinforcement bars do confirm to BS8666.
- Material wastage is controlled and reduced.
- Lesser on-site labor is required
- Better utilization of on-site space, logistics and reduction of inventory on-site.
- In-house processes and procedures that ensure traceability down to the order level.
- Weather Independent

FACILITIES OFFERED

- Cutting of carbon steel, hot-rolled round bar and deformed steel bar in all kinds of reinforced concretes in construction projects and buildings sites.
- Well-designed rod cutters which gives users perfect, smooth and perfect cut.
- Can cut various sizes of rods up to the maximum size of 50mm.
- Bending reinforcement bars and various forms of round bars.
- Automatic angle section permits precise bend at a preset angle making it one step bending process for various forms of bends and stirrups.



TELECOMMUNICATION & POWER SERVICES

We offer Telecommunication & Power Services for the under-listed works:

TELECOMMUNICATION SERVICES

Civil work: at Green Field Sites (GFS), Rooftop Sites (RTS) & Indoor Building Sites (IBS).

A- Construction of Telecommunication Equipment (TE) Rooms/Cabinet/Foundation.

B- Radio Frequency-RF Antenna's Mount/Supports installation at Towers/Buildings.

C- Micro-Wave -MW Antenna's Mount/Supports installation at Towers/Buildings.

D- Civil Trenching for Cable installations.

E- Tower fencing civil works & fencing installation.

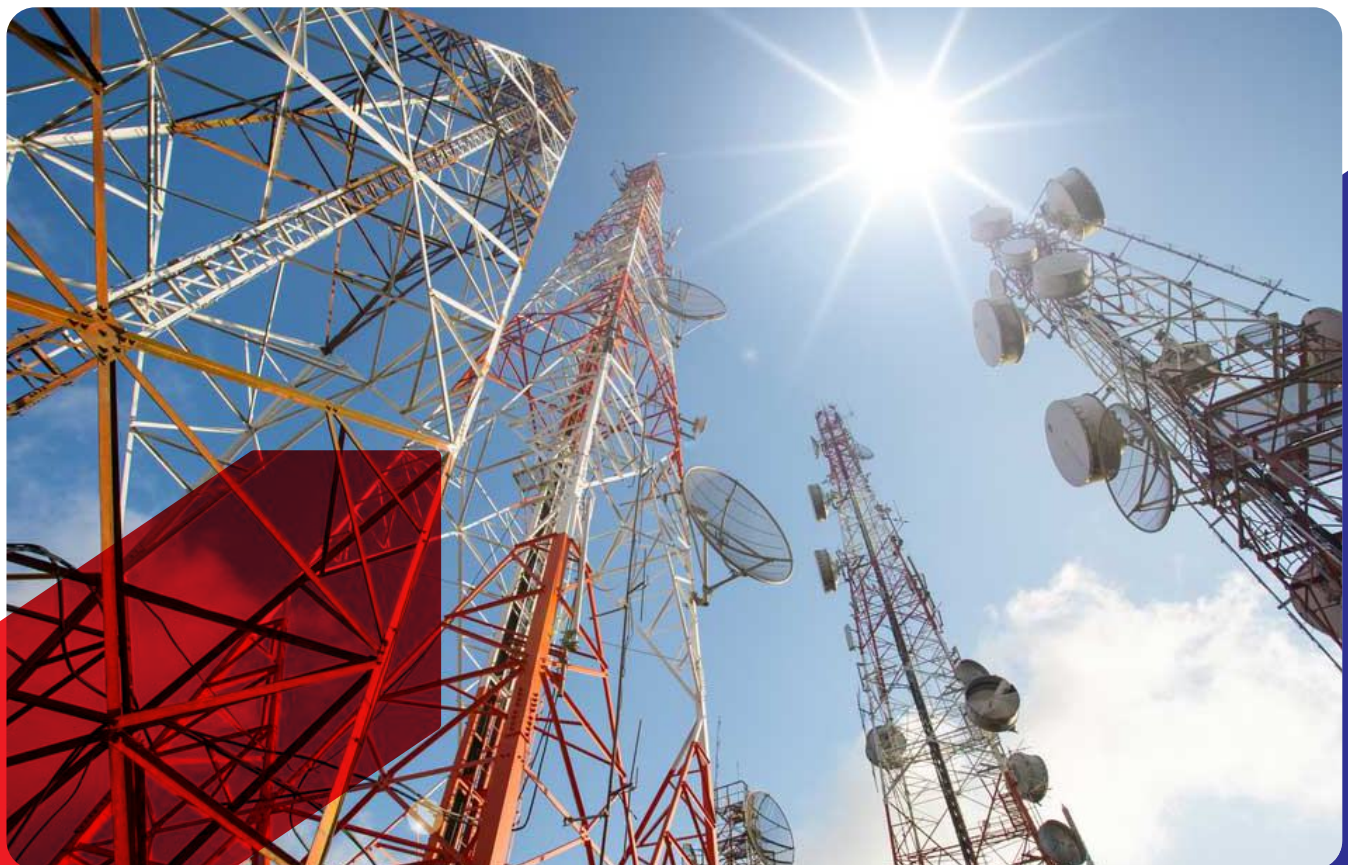
Telecommunication Equipment Installation: at Green Field Sites (GFS), Rooftop Sites (RTS) & Indoor Building Sites (IBS).

A- BTS installation including power & transmission connections.

B- RF Antennas installations including RF & Power cables.

C- MW Links installation including MW & Power Cables and link budgeting and alignments in terms to achieve RSL.

D- Complete Tower Equipment's installation, commissioning & Testing.



POWER SERVICES

We offer Rebar Workshop Based Services for the under-listed works:

POWER SERVICES: at Green Field Sites (GFS), Rooftop Sites (RTS) & Indoor Building Sites (IBS).

- A- Power cables installation from Main/GOVT ACDB to Sub/Tower ACDB.
- B- Rectifier installation including in/out connections.
- C- Power cables installation from Sub/Tower ACDB to Rectifier Panel.
- D- BTS, RF Antenna, MW links Power connections & distribution.
- E- Diesel Generator/DG Installation & Power Connections to Rectifier and Sub-ACDB.
- F- UPS & Batteries installations and connections to rectifier & inverter.
- G- AC installations & Power Connections.
- H- Lightning Installation & Power Connections.
- I- TE Room Alarms Panel Installation & Power connections.
- J- TE Room Alarms Connections & Testing with NOC.
- K- CCTV Cameras installation if requires.



TELECOMMUNICATION MECHANICAL SUPPLY & SERVICES.

We offer Telecommunication Mechanical Supply & Services for the underlisted works:

Telecommunication Mechanical Supply & Services: Offer for Green Field Sites (GFS), Rooftop Sites (RTS) & Indoor Building Sites (IBS).

A- RF/MW Mechanical Mount & Pole Fabrication, Erection, Welding, Galvanizing, Delivery & Installation at Green Field Sites (GFS) like Tri-Leg Tower, Quad Led Tower, Monopole etc.

B- RF/MW Mechanical Mount & Pole Fabrication, Erection, Welding, Galvanizing, Delivery & Installation at Rooftop Sites (RTS) like Tri-Leg Tower, Quad Led Tower, Wall-Mounted Poles etc.



REAL ESTATE (Construction, Sale, Purchase & Rent)



TECHNICAL MANPOWER ASSISTANCE

We offer Manpower & Overseas Supply with Recruitment for the under-listed

Our prime objective is the workforce development i.e. there are employers who want to hire while creating diversity in their workplace, but can't find peoples with the skill sets they need. That's why we use our position to determine current & future skill gaps, identify peoples from various backgrounds who need help entering the workforce, and apply our expertise to create solutions that benefit both job seeker and employers.

"OUR CUSTOMIZED PROGRAMS PROVIDE SKILLS ASSESSMENTS, JOB TRAINING, PLACEMENT SERVICES, AND PARTNERING WITH EMPLOYERS, GOVERNMENT AND COMMUNITY-BASED ORGANIZATION"

We offer Technical Manpower Assistance/Manpower Supply for the under-listed skilled and unskilled categories of workforce:

- Safety Officer (IOSH & NEBOSH)
- Mechanical Engineer-Piping
- Mechanical Engineer-Structure
- Electrical Engineer
- Mechanical Permit Holder-Receiver
- Mechanical Permit Holder-Issuer
- Mechanical Fabricator-Piping
- Mechanical Fabricator-Structure
- Mechanical Fitter-Piping
- Mechanical Fitter-Structure
- Multi Welder-Piping (M.S, ERW, C.S Base)
- Multi Welder-Structure (M.S, ERW, C.S Base)
- SMAW/ARC Welder-Piping (M.S, ERW, C.S Base)
- SMAW/ARC Welder-Structure (M.S, ERW, C.S Base)
- GTAW/TIG Welder-Piping (M.S, ERW, C.S Base)
- GTAW/TIG Welder-Structure (M.S, ERW, C.S Base)



- Millwright Fitter
- Electrician-Tech
- Instrumentation-Tech
- Fire Watcher
- Hole Watcher
- Grinder/Cutter
- Gas Cutter
- Helper
- Light Vehicle-Driver
- Heavy Vehicle-Driver
- Manlift Operator
- JCB Operator
- Forklift Operator
- Crane Operator
- Rigger For Signaling
- Scaffolders
- Tile Fixer-Mason
- Plaster-Mason
- Painter
- Ceiling-Mason
- Administrative/Financial Executive & Staff
- Civil Engineer
- Architects & Structural Engineers
- Design Engineers
- MEP Engineers
- HVAC Engineers
- Quantity Surveyors & Estimators
- Planning Engineers
- Designers & Draftsman
- Foremen
- Surveyors
- Document Controllers
- Operator & Drivers
- Supervisors
- Technicians (Skilled labor)
- Semi-Skilled Labor
- Telecommunication Engineers
- RF Engineers
- Transmission Engineers
- Telecommunication Technicians/Electricians
- Riggers (Tower Work)
- Mason-Tech (Telecommunication Site Expert)
- Mechanical Technician (Mount & Pole, Fencing)
- Mechanical Technician (Tower Erection, Shelter Erection)
- Electrical Technician (Power & DG)
- Renting Of 4C/6C/8C & 2Wheel/4Wheel Vehicles
- Drivers Of 4C/6C/8C & 2Wheel/4Wheel Vehicles
- Telecommunication Draftsman (AutoCAD)
- Telecommunication Team Leader
- Telecommunication Implementation Manager
- Telecommunication Planning Engineer
- Telecommunication Project Manager
- Bricks Mason
- Shuttering Mason
- MEP Engineer
- Helpers



STAFF & LABOUR ACCOMMODATION

We offer STAFF & LABOUR ACCOMMODATION for the under-listed

ACCOMMODATION

We take care of all facility management within our residence and ensure the sound operation and maintenance of our assets. Our technically competent team is trained to provide the highest of living standards for our worker accommodation.

Operating a worker accommodation in Dubai at full scope of both hard and soft facility management services, we cover all aspect of facility management and manage the cleanliness of all rooms at all times.

The 34sqm rooms provide deluxe space with flexible configurations that can accommodate up to 10 persons per room. With private cupboards, A/C, television and satellite channel connection; the rooms are among the most wanted workers accommodations in the region.



LABOUR ACCOMMODATION

Spacious and well proportioned worker accommodation AC rooms, housing bunk beds that accommodate up to 10 persons with personal lockers and has direct access to a common ablution area on each floor.



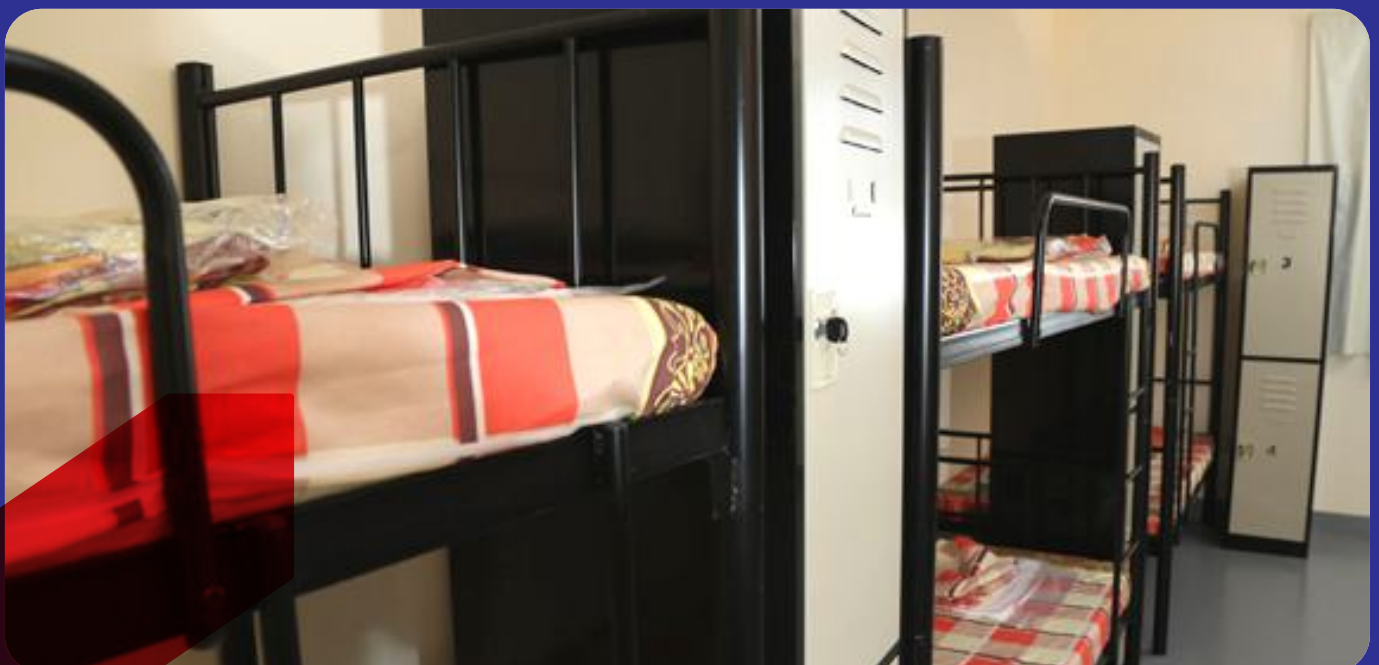
JUNIOR ACCOMMODATION

Spacious and well proportioned AC rooms, housing single beds that accommodate up to 6 persons with personal lockers, satellite television, work table and direct access to common ablution area on each floor.



SENIOR ACCOMMODATION

Spacious and well proportioned AC rooms, housing single beds that accommodate up to 6 persons with personal lockers, satellite television, work table and direct access to common ablution area on each floor.



MANAGEMENT SERVICES

We offer Management Services for the under-listed

CONSTRUCTION SITE MANAGEMENT

As the complexity of construction and engineering projects changes, the magnitude of risk involves for owners, contractors, and engineers increases the possibility of negative impacts and damages on projects and MEGA TECH SERVICES recognizes this potential. Our construction risk management consultants adopt to the continuously changing engineering and construction industries while maintaining proven practices and procedures throughout the construction process.

Under the management and direct administrative control of the client, we provide complete solution for the construction site management including the following:

- All categories of engineering and technical field staff i.e engineers, foremen, supervisor, skilled and un-skilled labor.
- Implementing and maintaining systems for managing health, safety and welfare of engineering and technical field staff.
- Liaising with client, other construction professionals.
- Coordinating and supervising construction workers.
- Selecting tools & materials for construction projects.
- Making safety inspections and ensuring construction and site safety.
- Maintaining Quality Control Procedures.



CAMP MANAGEMENT & ADMINISTRATION

- Customer services & reception.
- Administrative staff & house-keeping support.
- Front Desk management.
- Security & Pass control

MAINTENANCE WORK MANAGEMENT

- Planning & Scheduling
- Work Requests
- Breakdown maintenance including fast response to emergency breakdowns

FACILITIES MANAGEMENT

- Road & Ground maintenance
- Dust removal, grading
- Landscaping and lawn mowing
- Pest control
- Preventative maintenance
- Housekeeping, janitorial and cleaning
- Laundry services
- Cleaning of all external and common area of the camp
- Recreation facilities
- Medical facilities
- Waste management

CAMP OPERATIONS

We aim to maintain positive morale and sense of community in our camps through our quality services, health and safety standards, recreational activities, and nutritional advice.



CONSTRUCTION OF TEMPORARY SITE FACILITIES

MEGA TECH SERVICES provide The Temporary Facilities in the construction site consist of: buildings (construction offices, accommodation buildings, warehouse, etc.); utilities (water and electricity, etc.); and infrastructures (access way, and site security systems) to be used during the construction activities.



DEMOLITION OF TEMPORARY SITE FACILITIES & CONSTRUCTION'S LEFTOVERS

Without a doubt, it is imperative that you have MEGA TECH SERVICES to assess your site in Step 1: Site assessment and Step 2: Preparation of the demolition process. Not only can they detect deadly substances such as asbestos and paint containing lead, but they can also remove them safely from the site. Having a professional contractor's review your site is the only surefire way to ensure you are meeting your desire responsibilities while keeping everyone onsite (and offsite) safe.



MEGATECH SERVICES can help make your demolition process a safe one. We are experienced in identifying and removing hazardous materials at a quick turnaround. Our experienced staff is comfortable conducting thorough audits of all kinds of sites, big and small. After the audit, our staff can provide recommendations and advice for the maintenance and/or removal of any hazardous substances.

DEMOLITION OF TEMPORARY SITE FACILITIES

- Buildings
- Sheds
- Porta Cabins
- Mechanical Structures
- Silos
- Chimney stacks
- Towers
- Erected Scaffoldings
- Fencing
- Sign Boards & etc.

DEMOLITION OF CONSTRUCTION'S LEFTOVERS

- Civil related items, machineries, material, shuttering, Bars, Rebars, scaffoldings etc
- Mechanical related items, Machineries, material like pipes, fittings, valves, spools, angles etc.
- Electrical related items, tools & tackles, material like cables, wires, fixtures, ancillaries etc.
- Plumbing related items, tools & tackles, material like waste pipes, fittings, fixtures, ancillaries etc.



TRANSPORTATION SERVICES

PICK & DROP FOR WORKERS

We provide safe & reliable charter transportation in specialized buses that ensure your workers arrive to the site safely and minimize potential delays. In today's busy roadways, minimizing the risk and congestion is one of the main reasons why our clients turn to us in order to avail our transportation services for their specific needs.



RENT-A-CAR SERVICE

Our Rent-A-Car facility shall include the exclusive rental services, in the following categories:

- Passenger Cars
- 4 Wheel Drive Cars
- Mini Buss
- Buss

SUPPLY OF BUILDING, ELECTRICAL, MECHANICAL MATERIALS.

We supply Building Construction, Electrical, Mechanical & OILFIELD Services as per orders.



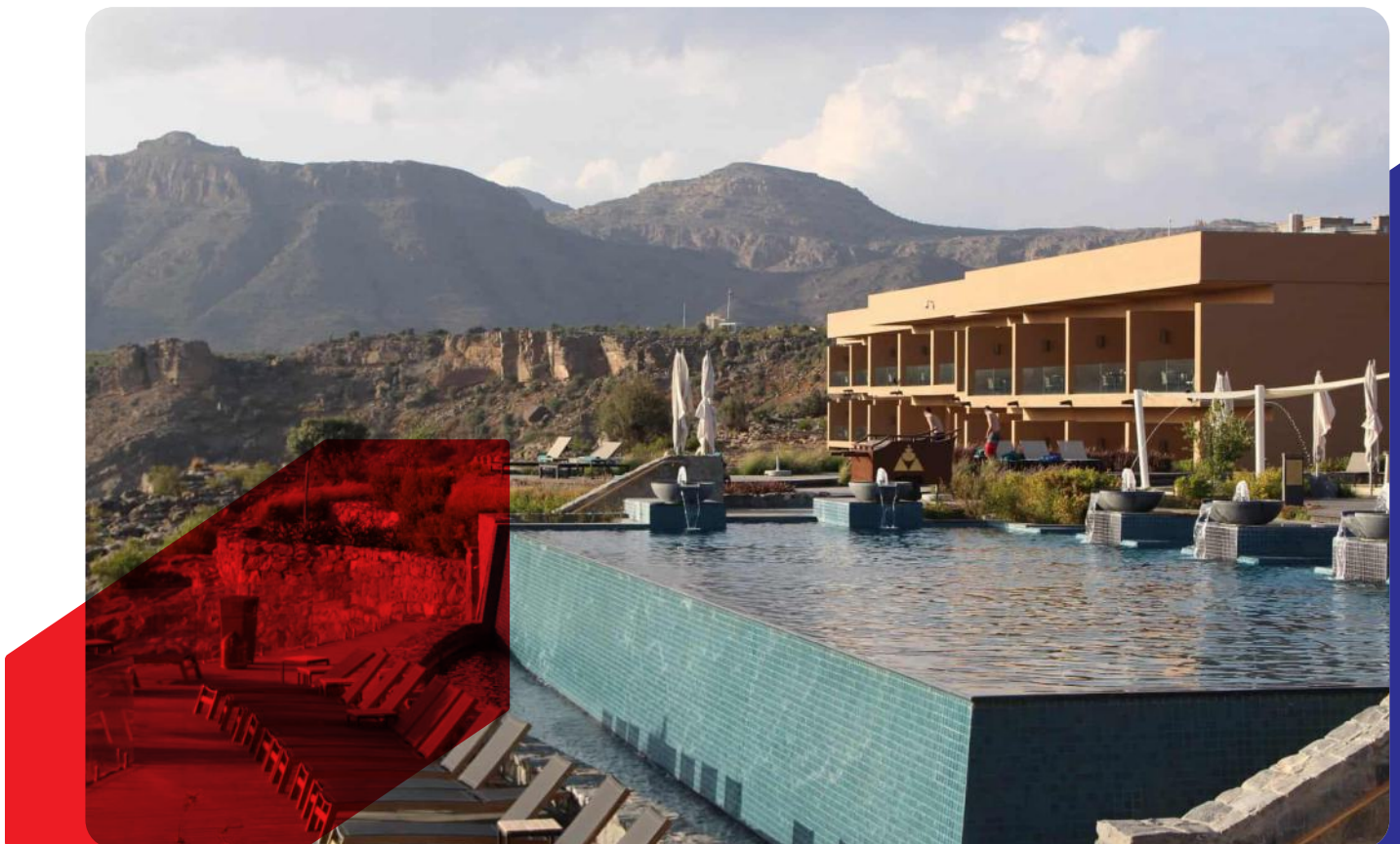
COMPLETED PROJECTS

SR No	COMPLETED PROJECTS NAME	SCOPE OF WORK DONE
1	Nawras Commercial Centre At Al Khuwair	HVAC (CHW & Ducting) System, Fire-Fighting System, Electrical Installation
2	New Muscat Airport (Departure & Outlets)	HVAC (CHW & Ducting) System, Fire-Fighting System, Electrical Installation, Demolition
3	New Muscat Airport (Lease Able Offices)	Temporary Site Facilities, HVAC (CHW & Ducting) System, Fire-Fighting System, Electrical Installation, , Demolition
4	New Muscat Airport (Muscat Pharmacy Departure)	HVAC (CHW & Ducting) System, Fire-Fighting System, Electrical Installation
5	New Muscat Airport (WH Smith Departure)	HVAC (CHW & Ducting) System, Fire-Fighting System, Electrical Installation, Demolition
6	Supreme Court At Ghubrah	Temporary Site Facilities, HVAC (CHW & Ducting) System, Fire-Fighting System, Electrical Installation
7	Kempenski Hotel At Wave	Temporary Site Facilities, HVAC (CHW & Ducting) System, Fire-Fighting System, Electrical Installation, , Demolition
8	IBIS Hotel At Sohar	HVAC (CHW & Ducting) System, Fire-Fighting System, Electrical Installation, Demolition
9	Printing Press At MAM	HVAC (CHW & Ducting) System & Fire-Fighting System Installation
10	Al Raha Village At KOM	HVAC (CHW & Ducting) System
11	Nizwa Grand Mall	HVAC (CHW & Ducting) System, Fire-Fighting System, Electrical Installation



COMPLETED PROJECTS

SR No	COMPLETED PROJECTS NAME	SCOPE OF WORK DONE
12	Jasmin Complex At Al Khuwair	HVAC (CHW & Ducting) System & Fire-Fighting System
13	Anantara Hotel At Jabal Al Akhtar	HVAC (CHW & Ducting) System, Fire-Fighting System, Electrical Installation
14	Panorama Mall At Bowsher	Temporary Site Facilities, HVAC (CHW) System & Fire-Fighting System
15	Ramal Castle At Bowsher	Temporary Site Facilities, HVAC (CHW & Ducting) System, Fire-Fighting System, Electrical Installation, Demolition
16	Adam Air Base	Temporary Site Facilities, HVAC (CHW & Ducting) System, Fire-Fighting System, Electrical Installation, Demolition
17	MOD (IZKI)	Fuel Tanks Fabrication, Erection & Welding
18	PALM Mall At Sohar	HVAC (CHW & Ducting) System, Fire-Fighting System, Electrical Installation
19	Water Transmission Line (Hayma)	Water Transmission Pipeline's Fabrication, Erection & Welding As per WPS
20	OASIS Mall At Sohar	MEP Services & ELV
21	Royal Guard Of OMAN-Halban	HVAC (CHW & Ducting) System, Fire-Fighting System, Electrical Installation



COMPLETED PROJECTS

SR No	COMPLETED PROJECTS NAME	SCOPE OF WORK DONE
22	Royal Guard Of OMAN-Seeb	HVAC (CHW & Ducting) System, Fire-Fighting System, Electrical Installation
23	Cinepolis Cinema At Avenue Mall-Muscat	MEP Services & ELV
24	Aster Hospital At Al Ghubrah-Muscat	HVAC (CHW & Ducting) System, Fire-Fighting System, Electrical Installation
25	HSEW Royal Court Affairs-Nizwa	HVAC (CHW & Ducting) System
26	Omantell MC01 Data Center Phase-1 At Barkah	Temporary Site Facilities, HVAC (CHW & Ducting) System & Fire-Fighting System
27	Muscat Private Hospital Baushar-Muscat	HVAC (CHW & Ducting) System & Electrical Installation
28	Royal Hospital Baushar-Muscat	Copper Piping For Medical Gasses, HVAC (CHW & Ducting) System & Fire-Fighting System
29	Construction work for water transmission system from Sohar To Ad-Dhahirah Governate (PetroJect)	Stringing & Welding Joints & Laying of 1600MM & 1200MM Dia CS Pipes for water transmission system from Sohar
30	Water Transmission Pipeline 1600MM Dia CS Pipes From The Water Treatment Plant Of Wadi Fayqah Dam At Mazari In Wilayat Qurayat To Deem In Muscat Governorate (Egyptian Contracting)	Excavating, Stringing & Welding Joints & Laying of 1600MM Dia CS Pipes For Water Transmission Pipeline From The Water Treatment Plant Of Wadi dayqah (Qurayat)
31	Water Transmission Pipeline 1400MM Dis CS Pipes Main For Expansion Of Distribution Networks in Al Amerat Wialyat (Hasan Juma Backer JV Tae Young)	Stringing & Welding Joints & Laying Of 1400MM Dis CS Pipes For expansion Of Distribution Networks In Al Amerat Wialyat



OUR ON-GOING PROJECTS

SR No	COMPLETED PROJECTS NAME	SCOPE OF WORK DONE
1	Omantell MC01 Data Center Phase-2 At Barkah	HVAC (CHW & Ducting) System, Fire-Fighting System, Electrical
2	Duqm Refinery Project-EPC1/TRD	EM&I, Refinery Piping & Structure work
3	Duqm Refinery Project-EPC2/PSJV	EM&I, Refinery Piping & Structure work
4	Duqm Refinery Project-EPC3/SAIPEM	EM&I, Refinery Piping & Structure work, HVAC (CHW & Ducting) & Fire-Fighting System
5	Al-Zain Poultry Farm	Temporary Site Facilities, Amunia Cutting Plant's Installation
6	YITI Sustainable City 300 Villa	HVAC (CHW & Ducting) System, Electrical Installation Work
7	Five Star Hotel & Apartments Wave Muscat	Electrical Installation Work
8	Valve Chambers for 48"-96" Valves	Construction Of Valve Chambers for 48"-96" Valves



MEGA TECHNOLOGY & SERVICES SPC

Contact Us

CR: 1430944, PC: 121, P.O BOX: 321

Telephone: +96824785618/96342928

Email: info@megatechservices.net

Web: www.megatechservices.net

Muscat, Sultanate Of Oman